

## Shirotai Ranch 城岱牧場

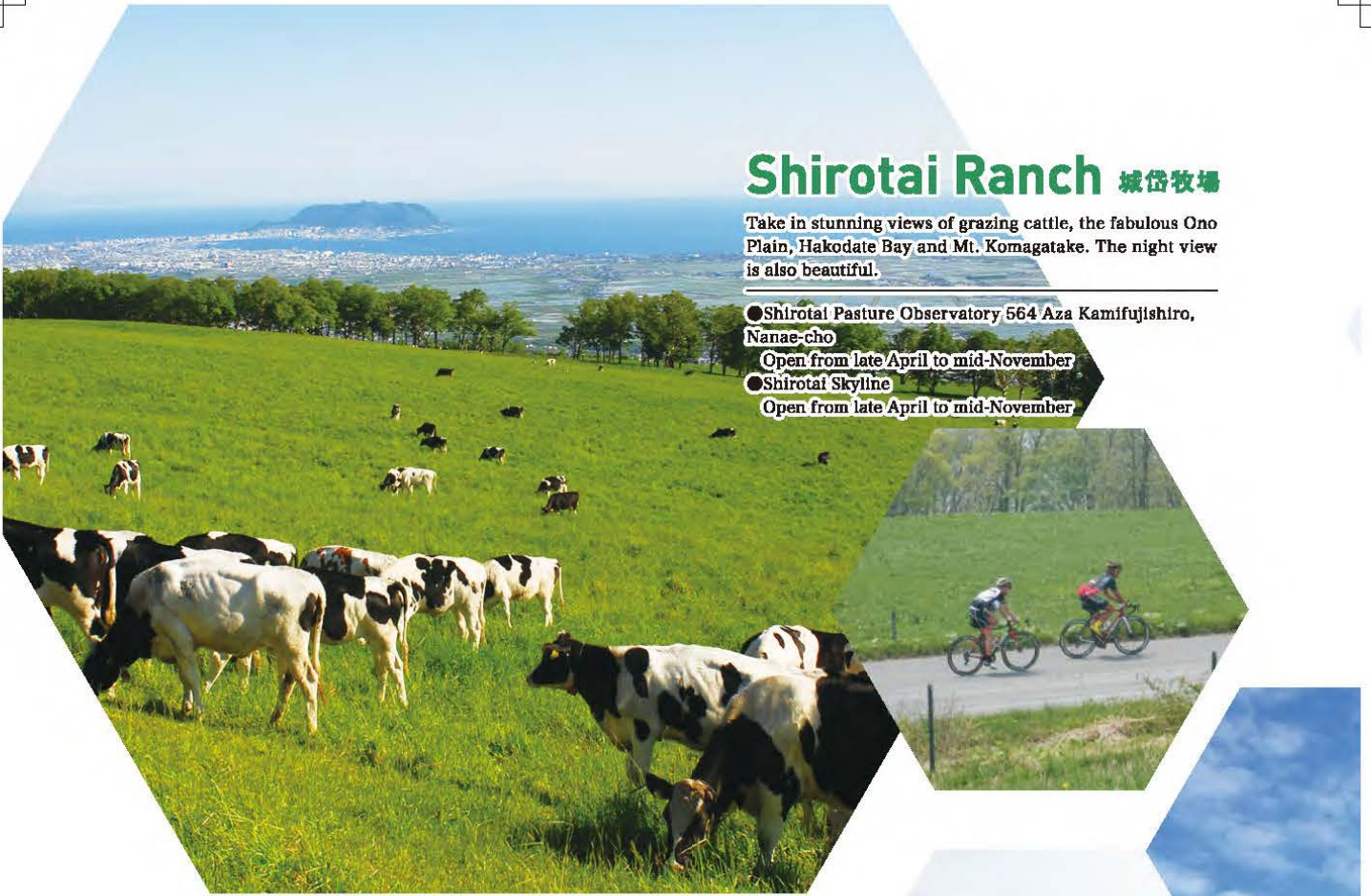
Take in stunning views of grazing cattle, the fabulous Ono Plain, Hakodate Bay and Mt. Komagatake. The night view is also beautiful.

●Shirotai Pasture Observatory 564 Aza Kamifujishiro, Nanae-cho

Open from late April to mid-November

●Shirotai Skyline

Open from late April to mid-November



## Higashi Onuma Campsite 東大沼キャンプ場

This is a campsite on Lake Onuma. The campsite provide free cooking facilities and restrooms with flush toilets for use by everyone. A lawn site and a forest site provide space for 200 tents.  
(Season: April 25 to late October)



## Golf ゴルフ

In the natural Komagatake area, enjoy golfing on various charming courses.



## Snowshoeing

スノーシュー



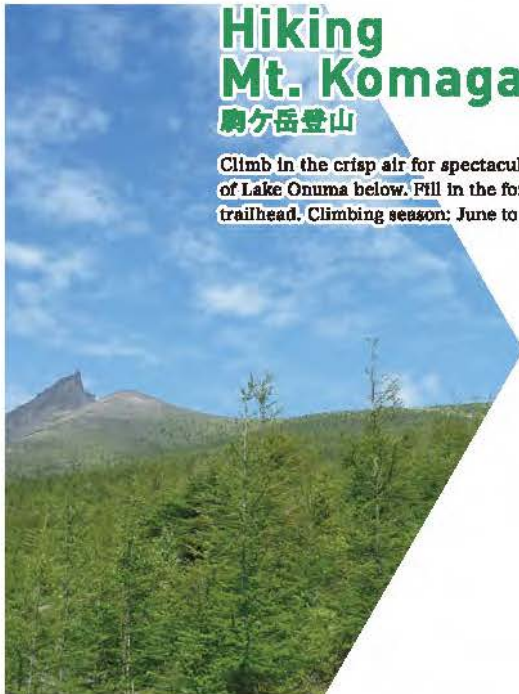
Snowshoes let you walk easily over the snow, so you can really get out into the deep natural powder. Enjoy a tranquil, snow-white world. (By reservation only)



## Snowmobiling

スノーモービル

Drive a snowmobile or a snow buggy on the frozen lake.



## Hiking Mt. Komagatake

駒ヶ岳登山

Climb in the crisp air for spectacular views of Lake Onuma below. Fill in the form at the trailhead. Climbing season: June to October

## Ice fishing for pond smelt

ワカサギ釣り



Fishing for pond smelt is a fun winter activity at the frozen Lake Onuma. Fishing rods are available for rent.



## Skiing

スキー



Nanae Town has two ski areas. Appreciate spectacular views while enjoying winter sports.



# Gourmet cuisine

Nanae Town is blessed with nature and celebrated for agriculture and dairy farming. There are lots of special local products, such as delicious beef, other agricultural products, dairy products and alcohol. Enjoy authentic tastes that you can taste only here.



## Beef over rice 牛めし

Free-range Onuma beef from cattle raised at the foot of Mt. Komagatake is served with special seasonings over rice.



## Nanae pickles ななえ漬

Matsumae pickles are made from Nanae produce, such as dried daikon radish shavings and dried apples.

## Onuma rice dumplings 大沼だんご

Onuma is famous for these sweets. The bite-sized dumplings are inspired by the small islands in Lake Onuma.



## Onuma beef



## Specialty

## Water shield じゅんさい

Lake Junsainuma, where water shield is grown, is on the west side of the Onuma area. Water shield, sold as produce, is famous for its jelly-like texture.



## Onuma Beer 大沼地ビール

This local craft beer is brewed in Nanae with natural ionized alkaline water. The rich aroma and flavor fill your senses.



## Drinks

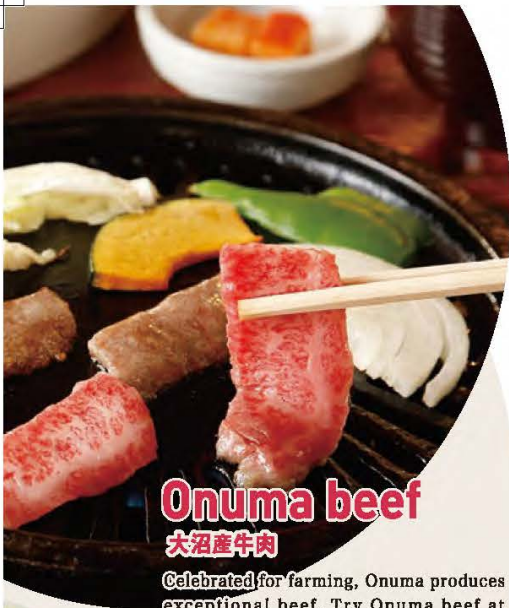
## Hakodate Wine はこだてわいん

Hakodate Winery Grape Pavilion a factory-direct retail store, features more than 150 wines, including those it produces itself.



Nanae's famous apples are used to make various sweets.





## Onuma beef

大沼産牛肉

Celebrated for farming, Onuma produces exceptional beef. Try Onuma beef at speciality restaurants.



## Roast beef sandwiches

ローストビーフサンド

Lean, dry-aged Yamakawa beef is gently cooked. Enjoy the generous servings of roast beef.

## Cheese

チーズ

Various cheeses are available in Nanae Town, which is celebrated for dairy farming. These include Camembert, mozzarella, goat cheese and many more.



## Soft-serve ice cream

ソフトクリーム

Choose from several exotic varieties of soft-serve ice cream made with milk from Nanae, such as wine-flavored ice cream and kelp-flavored ice cream.



## Milk

牛乳

Thick, rich and mellow. Enjoy fresh milk.

## Dairy products

## Sweets made from apples



## Fruits

## Fruit-picking

くだもの狩り

Strawberries, cherries, plums, blueberries, peaches, grapes, apples

Many orchards are found in Nanae. Enjoy fruit-picking from early June to mid-November.





## The Onuma Lake Festival <Late July>

This traditional festival has been held for more than a century. Fireworks explode in the night sky. The reflections on the lake recall movie vistas.

## A memorial service / A lantern flotilla

Scores of lanterns are floated on the lake. This is a traditional memorial service for our ancestors and for those who have lost their lives on the water or who have recently died.



Shirotai Skyline opens (Late Apr.)



The Hakodate Onuma "Great Earth" Ride (cycling)(Sept.)



The Onuma Hakodate Snow and Ice Festival (Early Feb.)

# Event

Many thrilling festivals and sports events are held in Nanae Town.

- |                   |  |
|-------------------|--|
| <b>Late Apr.</b>  | <b>The Shirotai Skyline opens (closes in mid-Nov.)</b><br>城岱スカイライン開通             |
|                   | <b>The Lake Onuma Long-Distance Relay Race</b><br>大沼湖畔駅伝競走大会                     |
| <b>Early May</b>  | <b>The Hokkaido Onuma Japanese Crucian Carp Fishing Competition</b> 北海道大沼へら鮎釣り大会 |
| <b>Early June</b> | <b>Mt. Komagatake opens to climbers (closes in late Oct.)</b> 駒ヶ岳登山開始            |
| <b>Early July</b> | <b>The Nanae Akamatsu (red pine) Street Summer Festival</b> ななえあかまつ街道納涼祭         |
| <b>Late July</b>  | <b>Onuma Lake Festival</b><br>大沼湖水まつり  |
| <b>Early Aug.</b> | <b>Onuma Cow Festival</b><br>大沼べこっ子まつり   |
| <b>Sept.</b>      | <b>The Hakodate Onuma "Great Earth" Ride (cycling)</b><br>函館大沼ライドGREAT EARTH     |
| <b>Oct.</b>       | <b>The Kankoma Autumn Culinary Festival</b><br>環駒秋の味覚市                           |
| <b>Mid-Oct.</b>   | <b>The Hokkaido Onuma Great Run/Walk</b><br>北海道大沼グレートラン・ウォーク                     |
| <b>Late Dec.</b>  | <b>Ski areas open. (closes in mid-Mar.)</b><br>スキー場オープン                          |
| <b>Early Jan.</b> | <b>Ice fishing for pond smelt</b><br>氷上ワカサギ釣り                                    |
| <b>Feb.</b>       | <b>Onuma "Kankan" Café &amp; Activities</b><br>大沼寒感カフェ&アクティビティ                   |
| <b>Early Feb.</b> | <b>The Onuma Hakodate Snow and Ice Festival</b><br>大沼函館雪と氷の祭典                    |
| <b>Mid-Feb.</b>   | <b>The Nanae Kids' Snow Festival</b><br>ななえチビッコ雪まつり                              |



# Hot Springs(onsen)

There are many natural hot springs in Nanae Town, some with more than 150 years of history. These bustle with people seeking their therapeutic benefits. Relax and enjoy yourself at Nanae's hot springs.

## Nishi (West) Onuma Onsen

Hakodate-Onuma Prince Hotel  
西大沼温泉 函館大沼プリンスホテル  
Aza Nishi-onuma-onsen, Nanae-cho

## Apple Onsen

Nanae Health Center  
アップル温泉 七飯町健康センター  
194-1 Aza Nakano, Nanae-cho

## Higashi (East) Onuma

Onsen Tome-no-yu  
東大沼温泉 寶の湯  
42 Aza Higashi-onuma, Nanae-cho

## Niyama Onsen Ajisai-no-yu

ニヤマ温泉 あじさいの湯  
670 Aza Niyama, Nanae-cho

## Nanae Onsen Yuhi-no-yakata

ななえ天然温泉 ゆうひの館  
6-1,4-chome,Honcho,Nanae-cho

## Kelp soy sauce

昆布しょうゆ

### Hokkaido Konbu Kan (kelp museum)

This tasty, authentically brewed soy sauce comes with strips of kelp in the bottle. It's the best-selling product at Konbu Kan (kelp museum).



This kelp soy sauce is sold only at Hokkaido Konbu Kan.

## Fur goods

毛皮製品

### Sawade Fur Shop

Fur coats, scarves and other small accessories such as mink fur pins are available. From cold Hokkaido, warm fur is the perfect souvenir.

Main shops  
Sawade Fur Shop, Shops in Hakodate Airport, and Onuma International Communication Plaza



## Pond smelt, grilled ikada (raft) style

ワカサギのいかだ焼き

### Tsushima Kinsei

A traditional preserved food, salty-sweet pond smelt on a skewer resemble a raft floating on a river. It's a popular souvenir.

Main shops  
Gift shops around Onuma Park and Hakodate

# Souvenirs

An introduction to special local products that make ideal souvenirs  
There are plenty more available!



## Milk Mochi (rice cake)

ミルク餅

### Tengudo Takarabune

It's made with fresh Nanae milk. The chewy texture and rich milky flavor are typical of Hokkaido products.

Main shops  
Gift shops around Onuma Park and Hakodate

## Uncooked ramen noodles

生ラーメン

### Marumame Okada Noodle Factory

These uncooked ramen noodles are made with subsoil flow from the Yokotsu Mountains. Hakodate Ramen is made from only the finest ingredients.

Main shops  
Supermarkets and department stores in Nanae and Hakodate



## Dried apples

乾りんご

### Poporo-kan

These are made from carefully dried Nanae apples, without additives. Enjoy the novel texture: crisp but tender.

Main shops  
Onuma International Communication Plaza and Nanae Town Office

# Access

## From Tokyo

• Haneda Airport — Approx. 1 hr. 20 min. by air — **Hakodate Airport** — Approx. 1 hr. by car — **Onuma Park**  
 • JR Tokyo Sta. — Approx. 4 hr. by Shinkansen — **JR Shin-Hakodate Hokuto Sta.** — Approx. 15 min. by car. Travel time varies with train or bus services. — **Onuma Park**

## From Sapporo

• New Chitose Airport — Approx. 40 min. by air — **Hakodate Airport** — Approx. 1 hr. by car — **Onuma Park**  
 • JR Sapporo Sta. — Approx. 3 hr. and 30 min. by train — **JR Onuma Koen Sta.**

## From Hakodate

• JR Hakodate Sta. — Approx. 25 min. by express train — **JR Onuma Koen Sta.**  
 • JR Hakodate Sta. — Approx. 40 min. by car — **Onuma Park**

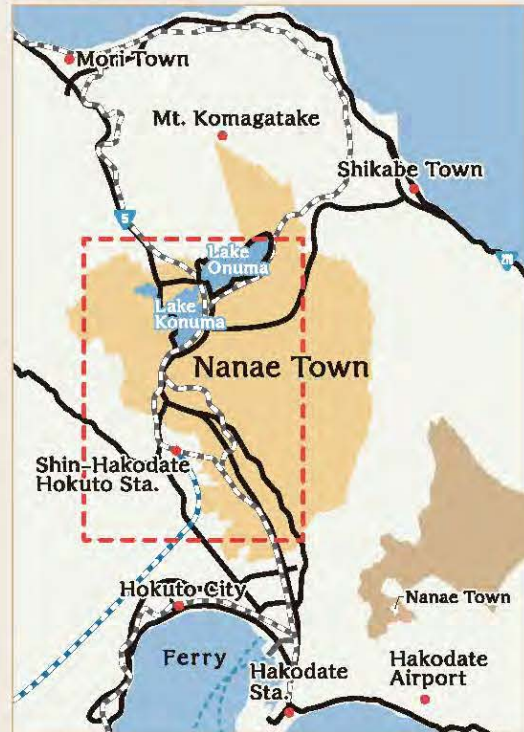
## From JR Shin-Hakodate Hokuto Sta.

• JR Shin-Hakodate Hokuto Sta. — Approx. 15 min. by car. Travel time varies with train or bus services. — **Onuma Park**

Map of Japan



Large-scale map



# Map of Nanae

